

NutAvant[®]

F I B R A

Normal-Calorie, Normal-Protein **Diet** with fiber

*100% soluble fiber.
For tube or oral feeding.*

Calorie density: 1 Kcal/ml
P/CH/Fat/Fiber = 16/46/35/3
Osmolarity: 409 mOsm/l

Financed by:
NHS
National Health Service

 **SUITABLE FOR CELIAC PATIENTS**



Vanilla

24X250 ml
C.I. 502468
12X500 ml
C.I. 502450



Strawberry

24X250 ml
C.I. 502484
12X500 ml
C.I. 502476



Banana

24X250 ml
C.I. 502542
12X500 ml
C.I. 502534



Chocolate

24X250 ml
C.I. 502500
12X500 ml
C.I. 502492



Cappuccino

24X250 ml
C.I. 502526
12X500 ml
C.I. 502518

FLAVOURS

Normal-Calorie, Normal-Protein Diet

NutAvant®

F I B E R A

NUTRITION FACTS	100 ml	250 ml	500 ml	
Energy	434/103	1084/259	2169/517	kJ/kcal
Total Fat	4	10	20	g
Of which: Saturated	2.7	6.7	13.5	g
MCT	2.1	5.3	10.5	g
Monounsaturated	0.8	2.2	4.4	g
Polyunsaturated	0.4	1.1	2.2	g
ω -3	0.10	0.25	0.5	g
ω -6	0.31	0.78	1.55	g
ω-6/ω-3 ratio: 3.1/1				
Total Carbohydrates	12	30	60	g
Of which: Sugars	5.2	13	26	g
Lactose	0.16	0.4	0.8	g
Dietary Fiber	1.5	3.8	7.5	g
Protein	4.1	10.2	20.5	g
Salt	0.28	0.69	1.38	g

MINERALS	100 ml	250 ml	500 ml	
Sodium	110	275	550	mg
Chloride	113	283	565	mg
Potassium	103	257	515	mg
Calcium	61	152	304	mg
Phosphorous	41.6	104	208	mg
Magnesium	18	45	90	mg
Iron	1.2	3.1	6.2	mg
Zinc	0.8	2	3.9	mg
Copper	0.09	0.22	0.45	mg
Iodine	8	19.5	39	μ g
Selenium	2.6	6.5	13	μ g
Manganese	0.2	0.5	1	mg
Chromium	1.3	3.3	6.5	μ g
Molybdenum	10	25	50	μ g
Fluoride	0.003	0.008	0.02	mg

VITAMINS	100 ml	250 ml	500 ml	
Vitamin A	80	200	400	μ g-RE
Vitamin D	0.6	1.5	3	μ g
Vitamin K	5.5	14	28	μ g
Vitamin C	6	15	30	mg
Thiamin	0.14	0.35	0.7	mg
Riboflavin	0.16	0.4	0.8	mg
Vitamin B6	0.2	0.5	1	mg
Niacin	18	4.5	9	mg NE
Folic acid	20	50	100	μ g
Vitamin B12	0.1	0.25	0.5	μ g
Pantothenic acid	0.6	1.5	3	mg
Biotin	7.5	19	38	μ g
Vitamin E	1	2.5	5	mg α -TE
Inositol	20	50	100	mg
Choline	20	50	100	mg

Osmolarity: 409 mOsm/l

Osmolality: 480 mOsm/kg

Low lactose content (not suitable for persons with galactosemia)

Low salt content (0.28 g / 100 ml)

Gluten free

NUTRITIONAL INFORMATION:

The standard dose (1,500 ml/day) contains 61.5 g of protein, 22.5 g of fiber, 180 g of carbohydrates, 60 g of fat, 1,545 kcal and provides 100% of the RDA (Recommended Dietary Allowance) of vitamins and minerals.

100% soluble fiber

SOURCE OF NUTRIENTS

PROTEINS 4,1 g / 100 ml

Milk proteins: proteins of whey (lactalbumin), sodium caseinate and calcium caseinate.

FATS 4 g / 100 ml

Canola oil and milk fat.

CARBOHYDRATES 12 g / 100 ml

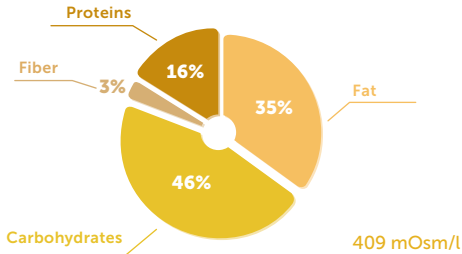
Maltodextrin, sucrose and lactose.

DIETARY FIBER (100% soluble) 1,5 g / 100 ml

Corn dextrin and oligofructose.

NUTRITION PROFILE

Calorie density: 1 Kcal/ml. P/CH/Fat/Fiber = 16/46/35/3



INDICATIONS

Malnourished patients or patients at nutritional risk who have difficulty swallowing or digesting food and who benefit from fibre intake.

- Frail elderly patients.
- Geriatric patients showing difficulties to meet their nutritional needs.
- Patients with indication for enteral nutrition both in hospital and at home.
- Patients with indication for short/medium/long-term tube nutrition.
- Suitable for patients over 3.

NUTRITION FACTS PER 250 ml BOTTLE

Kcal	Proteins	Carbohydrates
259	10,2 g	30 g
Fat	Fiber	
10 g	3,8 g	