

NutAvant[®]

HC

High-Calorie, Normal Protein **Diet** with fiber

*High-caloric density formula.
For tube or oral feeding.*

Calorie density: 1.62 Kcal/ml
P/CH/Fat/Fiber = 16/46/35/3
Osmolarity: 386 mOsm/l





 SUITABLE FOR CELIAC PATIENTS



FLAVOURS

- 

MultiFlavour
28X230 ml
C.I. 504922
- 

Vanilla
28X230 ml
C.I. 504599
- 

Strawberry
28X230 ml
C.I. 504602
- 

Banana
28X230 ml
C.I. 504601
- 

Chocolate
28X230 ml
C.I. 504603
- 

Cappuccino
28X230 ml
C.I. 504600

High-Calorie, Normal-Protein Diet

NutAvant[®]

HC

NUTRITION FACTS	100 ml	230 ml	
Energy	679/162	1563/373	kJ/kcal
Total Fat	6.3	14.5	g
Of which: Saturated	1.6	3.7	g
MCT	0.94	2.2	g
Monounsaturated	2.6	6	g
Polyunsaturated	2	4.6	g
ω -3	0.3	0.69	g
ω -6	1.5	3.5	g
ω-6/ω-3 ratio: 5/1			
Carbohydrates	18.63	43	g
Of which: Sugars	1.86	4.3	g
Lactose	0.3	0.69	g
Dietary Fiber	2.43	5.6	g
Protein	6.48	15	g
Salt	0.28	0.64	g

MINERALS	100 ml	230 ml	
Sodium	111	255	mg
Chloride	50	115	mg
Potassium	140	322	mg
Calcium	115	265	mg
Phosphorous	90	207	mg
Magnesium	19	43.7	mg
Iron	1.4	3.2	mg
Zinc	1	2.3	mg
Copper	0.1	0.23	mg
Iodine	15	34.5	μ g
Selenium	5.5	13	μ g
Manganese	0.2	0.46	mg
Chromium	4	9.2	μ g
Molybdenum	5.7	13	μ g
Fluoride	0.32	0.74	mg

VITAMINS	100 ml	230 ml	
Vitamin A	80	184	μ g-RE
Vitamin D	0.83	1.9	μ g
Vitamin K	7.5	17	μ g
Vitamin C	8	18	mg
Thiamin	0.11	0.25	mg
Riboflavin	0.14	0.32	mg
Vitamin B6	0.14	0.32	mg
Niacin	1.6	3.7	mg NE
Folic acid	20	46	μ g
Vitamin B12	0.25	0.58	μ g
Pantothenic acid	0.6	1.38	mg
Biotin	5	11.5	μ g
Vitamin E	1.2	2.8	mg α -TE
Inositol	20	46	mg
Choline	20	46	mg

Osmolarity: 386 mOsm/l

Osmolality: 522 mOsm/kg

Low lactose content (not suitable for persons with galactosemia)

Low salt content (0.28 g / 100 ml)

Gluten free

NUTRITIONAL INFORMATION:

The standard dose (1,000 ml/day) contains 65 g of protein, 186 g of carbohydrates, 63 g of fat, 24 g of fiber, 1,620 kcal and provides 100% of the RDA (Recommended Dietary Allowance) of vitamins and minerals.

High-caloric density formula

SOURCE OF NUTRIENTS

PROTEINS 6,48 g / 100 ml

Milk proteins: proteins of whey (lactalbumin), sodium caseinate and calcium caseinate.

FATS 6,3 g / 100 ml

Canola oil, corn oil, milk fat, soy lecithin and emulsifiers.

CARBOHYDRATES 18,63 g / 100 ml

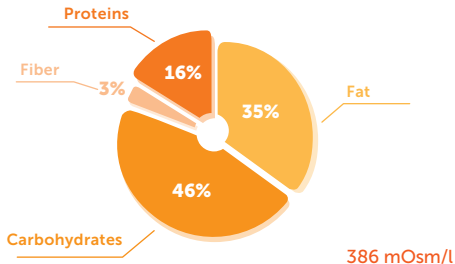
Maltodextrin, sucrose and lactose.

DIETARY FIBER (100% soluble) 2,43 g / 100 ml

Corn dextrin, oligofructose, carrageenan and xanthan gum.

NUTRITION PROFILE

Calorie density: 1.62 Kcal/ml. P/CH/Fat/Fiber = 16/46/35/3



INDICATIONS

Malnourished patients or patients at nutritional risk with high protein requirements who benefit from fibre intake.

- Patients experiencing a general metabolic stress, pre and postoperative care, trauma, and hip fractures.
- Patients with sarcopenia and/or cachexia.
- Frail elderly patients.
- Geriatric patients showing difficulties to meet their nutritional needs.
- Patients with neurological diseases: Alzheimer's disease and other dementias, cerebrovascular diseases, multiple sclerosis, amyotrophic lateral sclerosis, Parkinson's disease.
- Patients with digestive pathology.
- Patients who have had bariatric surgery and/or who require a limited food intake.
- Prevention and adjuvant therapy for pressure ulcers.
- Suitable for patients over 3.

NUTRITION FACTS PER 230 ml BOTTLE

Kcal	Proteins	Carbohydrates
373	15 g	43 g
Fat	Fiber	
14,5 g	5,6 g	