

NutAvant[®]

HP FIBRA

Normal-Calorie, High-Protein **Diet** with fiber

Isotonic solution for better intestinal tolerance.

For tube or oral feeding.

Calorie density: 1.08 Kcal/ml

P/CH/Fat/Fiber = 22/43/32/3

Osmolarity: 282 mOsm/l

Financed by:

NHS

National Health Service



SUITABLE FOR CELIAC PATIENTS



MultiFlavour
28X230 ml
C.I. 504748



Vanilla
28X230 ml
C.I. 504594



Strawberry
28X230 ml
C.I. 504597



Banana
28X230 ml
C.I. 504596



Chocolate
28X230 ml
C.I. 504598



Cappuccino
28X230 ml
C.I. 504595

FLAVOURS

Normal-Calorie, High-Protein Diet

NutAvant®

HP FIBRA

NUTRITION FACTS	100 ml	230 ml	
Energy	453/108	1042/248	kJ/kcal
Total Fat	3.8	8.8	g
Of which: Saturated	1	2.3	g
MCT	0.57	1.3	g
Monounsaturated	1.6	3.7	g
Polyunsaturated	1.3	3	g
ω -3	0.19	0.44	g
ω -6	0.91	2.1	g
ω-6/ω-3 ratio: 4.8/1			
Total Carbohydrates	11.6	27	g
Of which: Sugars	1.16	2.7	g
Lactose	0.26	0.6	g
Dietary Fiber	1.62	3.7	g
Protein	5.94	14	g
Salt	0.28	0.69	g

MINERALS	100 ml	230 ml	
Sodium	111	255	mg
Chloride	45	104	mg
Potassium	133	306	mg
Calcium	103	237	mg
Phosphorous	85	196	mg
Magnesium	19	43.7	mg
Iron	1	2.3	mg
Zinc	0.7	1.7	mg
Copper	0.07	0.17	mg
Iodine	11	24.8	μ g
Selenium	4	9.2	μ g
Manganese	0.14	0.33	mg
Chromium	2.9	6.7	μ g
Molybdenum	3.9	9	μ g
Fluoride	0.2	0.5	mg

VITAMINS	100 ml	230 ml	
Vitamin A	574	132	μ g-RE
Vitamin D	0.55	1.3	μ g
Vitamin K	54	12	μ g
Vitamin C	5.7	13	mg
Thiamin	0.07	0.18	mg
Riboflavin	0.1	0.23	mg
Vitamin B6	0.1	0.23	mg
Niacin	1.2	2.6	mg NE
Folic acid	144	331	μ g
Vitamin B12	0.2	0.41	μ g
Pantothenic acid	0.43	0.99	mg
Biotin	3.6	8.3	μ g
Vitamin E	0.8	2	mg α -TE
Inositol	15	35	mg
Choline	15	35	mg

Osmolarity: 282 mOsm/l

Osmolality: 342 mOsm/kg

Low lactose content (not suitable for persons with galactosemia)

Low salt content (0.28 g / 100 ml)

Gluten free

NUTRITIONAL INFORMATION:

The standard dose (1,500 ml/day) contains 89 g of protein, 174 g of carbohydrates, 57 g of fat, 24 g of fiber, 1,620 kcal and provides 100% of the RDA (Recommended Dietary Allowance) of vitamins and minerals.

High contribution of high biological value (HBV) proteins

SOURCE OF NUTRIENTS

PROTEINS 5,94 g / 100 ml

Milk proteins: proteins of whey (lactalbumin), sodium caseinate and calcium caseinate.

FATS 3,8 g / 100 ml

Canola oil, corn oil, milk fat, soy lecithin and emulsifiers.

CARBOHYDRATES 11,6 g / 100 ml

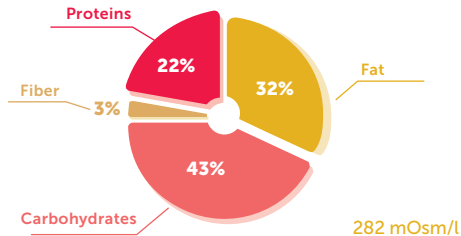
Maltodextrin, sucrose and lactose.

DIETARY FIBER (100% soluble) 1,62 g / 100 ml

Corn dextrin, oligofructose, carrageenan and xanthan gum.

NUTRITION PROFILE

Calorie Density: 1.08 Kcal/ml P/CH/Fat/Fiber = 22/43/32/3



INDICATIONS

Malnourished patients or patients at nutritional risk with high protein requirements who benefit from fiber intake.

- Patients experiencing a general metabolic stress, pre and postoperative care, trauma, and hip fractures.
- Patients with sarcopenia and/or cachexia.
- Frail elderly patients.
- Geriatric patients showing difficulties to meet their nutritional needs.
- Patients with neurological diseases: Alzheimer's disease and other dementias, cerebrovascular diseases, multiple sclerosis, amyotrophic lateral sclerosis, Parkinson's disease.
- Patients with digestive pathology.
- Patients who have had bariatric surgery and/or who require a limited food intake.
- Prevention and adjuvant therapy for pressure ulcers.
- Suitable for patients over 3.

NUTRITION FACTS PER 230 ml BOTTLE

Kcal	Proteins	Carbohydrates
248	14 g	27 g
Fat	Fiber	
8,8 g	3,7 g	