

NutAvant[®]

PLUS DIABÉTICA

High-Calorie, High-Protein **Diet**
with fiber for patients with diabetics

*Contributes to a better glycaemic control
For tube or oral feeding.*

Calorie density: 1.20 Kcal/ml
P/CH/Fat/Fiber = 22/40/35/3
Osmolarity: 315 mOsm/l





 SUITABLE FOR CELIAC PATIENTS



FLAVOURS


MultiFlavour
28X230 ml
C.I. 504747


Vanilla
28X230 ml
C.I. 504589


Strawberry
28X230 ml
C.I. 504592


Banana
28X230 ml
C.I. 504591


Chocolate
28X230 ml
C.I. 504593


Cappuccino
28X230 ml
C.I. 504590

High-Calorie, High-Protein Diet

NutAvant®

PLUS DIABETIC

NUTRITION FACTS	100 ml	230 ml	
Energy	503/120	1157/276	kJ/kcal
Total Fat	4.6	10.7	g
Of which: Saturated	1	2.4	g
MCT	0.69	1.6	g
Monounsaturated	2.3	5.3	g
Polyunsaturated	1.1	2.5	g
ω-3	0.33	0.76	g
ω-6	0.75	1.73	g
ω-6/ω-3 ratio: 2.27/1			
Total Carbohydrates	12	28	g
Of which: Sugars	2.5	5.8	g
Lactose	0.28	0.64	g
Dietary Fiber	1.8	4.1	g
Protein	6.6	15	g
Salt	0.28	0.64	g

MINERALS	100 ml	230 ml	
Sodium	111	255	mg
Chloride	45	104	mg
Potassium	133	306	mg
Calcium	110	253	mg
Phosphorous	95	219	mg
Magnesium	20	46	mg
Iron	1.1	2.6	mg
Zinc	0.8	1.8	mg
Copper	0.08	0.18	mg
Iodine	12	27.6	µg
Selenium	4.4	10	µg
Manganese	0.16	0.37	mg
Chromium	18	41	µg
Molybdenum	4.2	9.7	µg
Fluoride	0.2	0.5	mg

VITAMINS	100 ml	230 ml	
Vitamin A	64	147	µg-RE
Vitamin D	0.63	1.4	µg
Vitamin K	6	14	µg
Vitamin C	6.4	15	mg
Thiamin	0.08	0.2	mg
Riboflavin	0.11	0.26	mg
Vitamin B6	0.11	0.26	mg
Niacin	1.3	3	mg NE
Folic acid	16	36.8	µg
Vitamin B12	0.2	0.46	µg
Pantothenic acid	0.48	1.1	mg
Biotin	4	9.2	µg
Vitamin E	0.9	2.2	mg α-TE
Inositol	15	35	mg
Choline	15	35	mg

Osmolarity: 315 mOsm/l

Osmolarity: 389 mOsm/kg

It contains Isomaltulose

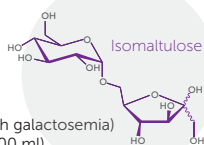
(glucose disaccharide and fructose: 1.2 g / 100 ml).

Low lactose content

(not suitable for persons with galactosemia)

Low salt content (0.28 g / 100 ml)

Gluten free



NUTRITIONAL INFORMATION:

The standard dose (1,500 ml/day) contains 99 g of protein, 180 g of carbohydrates, 69 g of fat, 27 g of fiber, 1,800 kcal and provides 100% of the RDA (Recommended Dietary Allowance) of vitamins and minerals.

Contains 10% isomaltulose: a disaccharide that is hydrolysed and absorbed slowly

SOURCE OF NUTRIENTS

PROTEINS 6,6 g / 100 ml

Milk proteins: proteins of whey (lactalbumin), sodium caseinate and calcium caseinate.

FATS 4,6 g / 100 ml

Canola oil, milk fat, soy lecithin and emulsifiers

CARBOHYDRATES 12 g / 100 ml

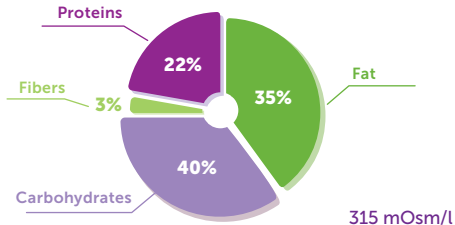
Maltodextrin, lactose and isomaltulose.

DIETARY FIBER (100% soluble) 1,8 g / 100 ml

Corn Dextrin, carrageenan and xanthan gum.

NUTRITION PROFILE

Calorie density: 1,20 Kcal/ml. P/CH/Fat/Fiber = 22/40/35/3



INDICATIONS

Malnourished patients with diabetic or patients with diabetic at nutritional risk with high calorie and protein requirements.

- Patients with diabetes mellitus type 1 and 2 or glucose intolerance.
- Patients with stress hyperglycaemia.
- Patients experiencing a general metabolic stress, pre and postoperative care, trauma, sepsis and hip fractures.
- Cancer patients undergoing radiation therapy, chemotherapy, surgery or biologic therapies.
- Patients with sarcopenia and/or cachexia.
- Frail elderly patients.
- Geriatric patients showing difficulties to meet their nutritional needs.
- Patients with neurological diseases: Alzheimer's disease and other dementias, cerebrovascular diseases, multiple sclerosis, amyotrophic lateral sclerosis, Parkinson's disease.
- Patients with digestive pathology.
- Patients with respiratory pathology (COPD, cystic fibrosis).
- Prevention and adjuvant therapy for pressure ulcers.
- Suitable for patients over 3.

NUTRITION FACTS PER 230 ml BOTTLE

Kcal	Proteins	Carbohydrates
276	15 g	28 g
Fat	Fiber	
10,7 g	4,1 g	