

SondAvant[®]

HP FIBRA

Normal-Calorie, High-Protein **Diet** with fiber

*Isotonic solution for better intestinal tolerance.
For tube feeding.*

Calorie density: 1.08 Kcal/ml
P/CH/Fat/Fiber = 22/43/32/3
Osmolarity: 282 mOsm/l





 SUITABLE FOR CELIAC PATIENTS



NEUTRAL FLAVOUR

12X500 ml
C.I. 504956

Normal-Calorie, High-Protein Diet

SondAvant®

HP FIBRA

NUTRITION FACTS	100 ml	500 ml	
Energy	453/108	2266/540	kJ/kcal
Total Fat	3.8	19	g
Of which: Saturated	1	5	g
MCT	0.6	2.9	g
Monounsaturated	1.6	8	g
Polyunsaturated	1.3	6.5	g
ω-3	0.19	0.95	g
ω-6	0.91	4.55	g
ω-6/ω-3 ratio: 4.8/1			
Total Carbohydrates	11.6	58	g
Of which: Sugars	0.6	3	g
Lactose	0.26	1.3	g
Dietary Fiber	1.6	8	g
Protein	5.94	30	g
Salt	0.28	1.4	g

MINERALS	100 ml	500 ml	
Sodium	111	555	mg
Chloride	45	225	mg
Potassium	133	665	mg
Calcium	103	515	mg
Phosphorous	85	425	mg
Magnesium	19	95	mg
Iron	1	5	mg
Zinc	0.72	3.6	mg
Copper	0.07	0.35	mg
Iodine	10.8	54	µg
Selenium	4	20	µg
Manganese	0.14	0.7	mg
Chromium	2.9	14.5	µg
Molybdenum	3.9	19.5	µg
Fluoride	0.21	1.05	mg

VITAMINS	100 ml	500 ml	
Vitamin A	57.4	287	µg-RE
Vitamin D	0.55	2.8	µg
Vitamin K	5.4	27	µg
Vitamin C	5.7	29	mg
Thiamin	0.08	0.4	mg
Riboflavin	0.1	0.5	mg
Vitamin B6	0.1	0.5	mg
Niacin	1.2	5.8	mg NE
Folic acid	14.4	72	µg
Vitamin B12	0.18	0.9	µg
Pantothenic acid	0.43	2.2	mg
Biotin	3.6	18	µg
Vitamin E	0.86	4.3	mg α-TE
Inositol	15	75	mg
Choline	15	75	mg

Osmolarity: 282 mOsm/l

Osmolality: 342 mOsm/kg

Viscosity: 47.2 cps

Low lactose content (not suitable for persons with galactosemia)

Low salt content (0.28 g / 100 ml)

Gluten free

Without sucrose

Vanilla scent to soften the effects of possible reflux

NUTRITIONAL INFORMATION:

The standard dose (1,500 ml/day) contains 90 g of protein, 174 g of carbohydrate, 57 g of fat, 24 g of fiber, 1,620 kcal and provides 100% of the RDA (Recommended Dietary Allowance) of vitamins and minerals.

High-protein formula; 100% HBV

SOURCE OF NUTRIENTS

PROTEINS 5,94 g / 100 ml

Milk proteins: proteins of whey (lactalbumin), sodium caseinate and calcium caseinate.

FATS 3,8 g / 100 ml

Canola oil, corn oil, milk fat, soy lecithin and emulsifiers.

CARBOHYDRATES 11,6 g / 100 ml

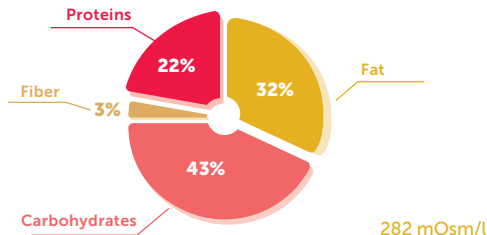
Maltodextrin and lactose.

DIETARY FIBER (100% soluble) 1,6 g / 100 ml

Oligofructose, corn dextrin, carrageenan and xanthan gum.

NUTRITION PROFILE

Calorie density: 1.08 Kcal/ml P/CH/Fat/Fiber = 22/43/32/3



INDICATIONS

Malnourished patients or patients at nutritional risk with high protein requirements who benefit from fibre intake.

- Patients with indication for short/medium/long-term tube nutrition.
- Patients with indication for enteral nutrition both in hospital and at home.
- Patients experiencing a general metabolic stress, pre and postoperative care, trauma, and hip fractures.
- Patients with sarcopenia and/or cachexia.
- Frail elderly patients.
- Geriatric patients showing difficulties to meet their nutritional needs.
- Patients with neurological diseases: Alzheimer's disease and other dementias, cerebrovascular diseases, multiple sclerosis, amyotrophic lateral sclerosis, Parkinson's disease.
- Patients with digestive pathology.
- Patients who have had bariatric surgery and/or who require a limited food intake.
- Prevention and adjuvant therapy for pressure ulcers.
- Suitable for patients over 3.

NUTRITION FACTS PER 500 ml BOTTLE

Kcal	Proteins	Carbohydrates
540	30 g	58 g
Fat	Fiber	
19 g	8 g	