

SondAvant[®]

PLUS DIABÉTICA

High-Calorie, High-Protein **Diet**
with fiber for patients with diabetic

*Contains isomaltulose, which contributes to better glycaemic control.
For tube feeding.*

Calorie density: 1.20 Kcal/ml
P/CH/Fat/Fiber = 22/40/35/3
Osmolarity: 315 mOsm/l

Financed by:
NHS
National Health Service



 SUITABLE FOR CELIAC PATIENTS



NEUTRAL FLAVOUR

12X500 ml
C.I. 504958

High-Calorie, High-Protein Diet

SondAvant®

PLUS DIABÉTICA

NUTRITION FACTS	100 ml	500 ml	
Energy	303/120	2515/600	kJ/kcal
Total Fat	4.7	23.3	g
Of which: Saturated	1.04	5.2	g
MCT	0.7	3.5	g
Monounsaturated	2.3	11.7	g
Polyunsaturated	1.1	5.6	g
ω -3	0.33	1.65	g
ω -6	0.75	3.75	g
ω-6/ω-3 ratio: 2.27/1			
Total Carbohydrates	12	60	g
Of which: Sugars	2.5	12.5	g
Lactose	0.28	1.4	g
Dietary Fiber	1.8	9	g
Protein	6.6	33	g
Salt	0.28	1.4	g

MINERALS	100 ml	500 ml	
Sodium	111	555	mg
Chloride	45	225	mg
Potassium	133	665	mg
Calcium	110	550	mg
Phosphorous	95	475	mg
Magnesium	20	100	mg
Iron	1.1	5.6	mg
Zinc	0.8	4	mg
Copper	0.08	0.4	mg
Iodine	12	60	μ g
Selenium	4.4	22	μ g
Manganese	0.16	0.8	mg
Chromium	18	90	μ g
Molybdenum	4.2	21.1	μ g
Fluoride	0.23	1.15	mg

VITAMINS	100 ml	500 ml	
Vitamin A	64	320	μ g-RE
Vitamin D	0.6	3	μ g
Vitamin K	6	30	μ g
Vitamin C	6.4	32	mg
Thiamin	0.09	0.4	mg
Riboflavin	0.1	0.5	mg
Vitamin B6	0.1	0.5	mg
Niacin	1.3	6.5	mg NE
Folic acid	16	80	μ g
Vitamin B12	0.2	1	μ g
Pantothenic acid	0.5	2.5	mg
Biotin	4	20	μ g
Vitamin E	1	5	mg α -TE
Inositol	15	75	mg
Choline	15	75	mg

Osmolaridad: 315 mOsm/l

Osmolality: 389 mOsm/kg

Viscosidad: 55.6 cps

It contains Isomaltulose (glucose disaccharide and fructose: 1.2 g / 100 ml)

Low lactose content (not suitable for persons with galactosemia)

Low salt content (0.28 g / 100 ml)

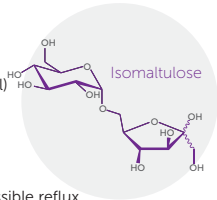
Gluten free

Without sucrose

Vanilla scent to soften the effects of possible reflux

NUTRITIONAL INFORMATION:

The standard dose (1,500 ml/day) contains 99 g of protein, 180 g of carbohydrates, 69.9 g of fat, 27 g of fiber, 1,800 kcal and provides 100% of the RDA (Recommended Dietary Allowance) of vitamins and minerals.



Contains isomaltulose: a disaccharide that is hydrolysed and absorbed slowly

SOURCE OF NUTRIENTS

PROTEINS 6,6 g / 100 ml

Milk proteins: proteins of whey (lactalbumin), sodium caseinate and calcium caseinate.

FATS 4,7 g / 100 ml

Canola oil, corn oil, milk fat, soy lecithin and emulsifiers.

CARBOHYDRATES 12 g / 100 ml

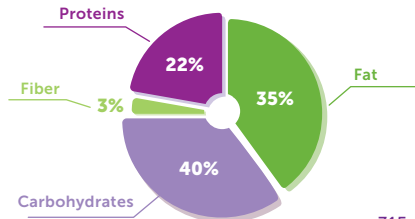
Maltodextrin, lactose and isomaltulose.

DIETARY FIBER (100% soluble) 1,8 g / 100 ml

Oligofructose, corn dextrin, carrageenan and xanthan gum.

NUTRITION PROFILE

Calorie density: 1.20 Kcal/ml. P/CH/Fat/Fiber = 22/40/35/3



315 mOsm/l

INDICATIONS

Malnourished patients with diabetic and patients with diabetic at nutritional risk with high calorie and protein requirements.

- Patients with indication for short/medium/long-term tube nutrition.
- Patients with indication for enteral nutrition both in hospital and at home.
- Patients with diabetes mellitus type 1 and 2 or glucose intolerance.
- Patients with stress hyperglycaemia.
- Patients experiencing a general metabolic stress, pre and postoperative care, trauma, sepsis and hip fractures.
- Cancer patients undergoing radiation therapy, chemotherapy, surgery or biologic therapies.
- Patients with sarcopenia and/or cachexia.
- Frail elderly patients.
- Geriatric patients showing difficulties to meet their nutritional needs.
- Patients with neurological diseases: Alzheimer's disease and other dementias, cerebrovascular diseases, multiple sclerosis, amyotrophic lateral sclerosis, Parkinson's disease.
- Patients with digestive pathology.
- Patients with respiratory pathology (COPD, cystic fibrosis).
- Prevention and adjuvant therapy for pressure ulcers.
- Suitable for patients over 3.

NUTRITION FACTS PER 500 ml BOTTLE

Kcal	Proteins	Carbohydrates
600	33 g	60 g
Fat	Fiber	
23,3 g	9 g	